

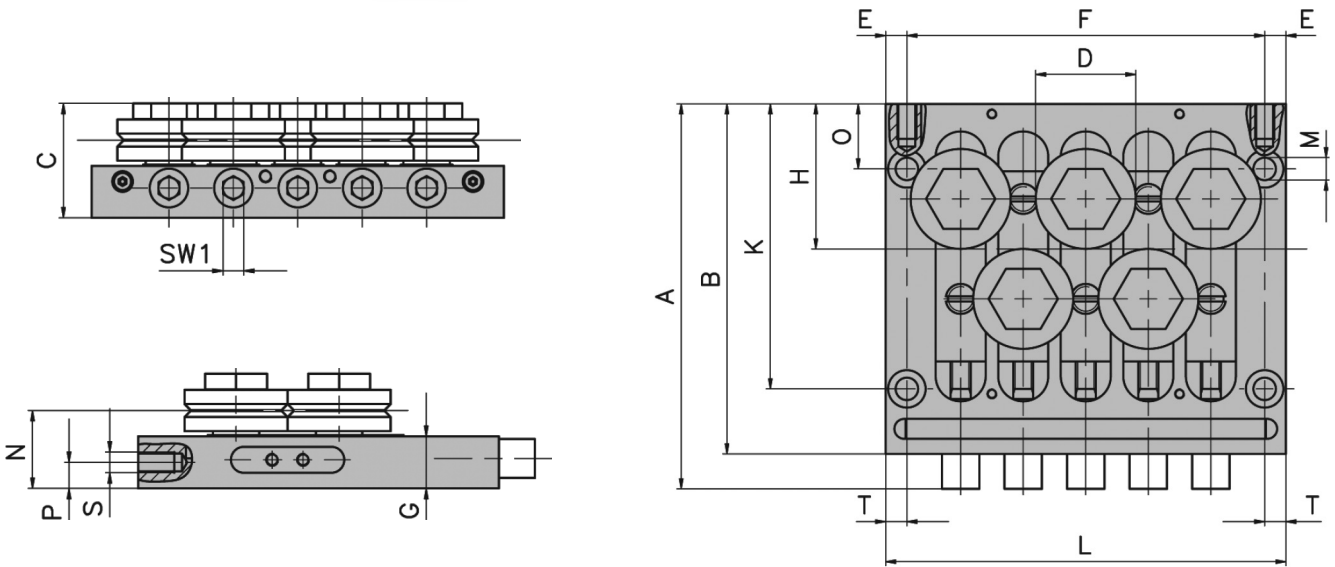
# Techna STRAIGHTENERS (WIRE & STRIP)

## RT - Straightener with Separately Adjustable Rollers

New evolution in Straightening Systems. Flexible, with movable centre line and two roll configurations.



RT5 - Five Roll Unit



RT Series	Wire Diameter Ranges (mm) $\phi$							
	$\leq 0.3$	0.3 - 0.5	0.5 - 0.9	0.9 - 1.5	1.5 - 3.0	3.0 - 5.0	5.0 - 7.0	7.0 - 9.0
Common Measurements								
A	51	69.5	82	116	124	154	206	226
B	45	62	73	102	110	140	190	210
C	15.8	21	24.3	33.3	41.4	44.1	59.8	54
D	4	7	17	23	31	40	52	62
E	4	5	6	6	6	8.5	12	12
G	12	15	15	20	20	20	25	25
H	17	24	28	44	48	58	83	94
K	25	45	53	82	90	114	150	170
M	4.5	4.5	5.5	6.6	6.6	9	11	13.5
N	13.8	17.5	19	24.5	28	30	37	37
O	-	17	20	20	20	26	40	40
P	6	7.5	7.5	10	10	10	12.5	12.5
S	M4	M5	M6	M8	M8	M8	M12	M12
T	5	6	6	8	8	8.5	15	15
SW1	3	4	5	8	8	8	10	10
Rolls	WR4	WR7	WR17	WR23	WR31	WR40	WR520	WR62
<b>5 Roll*</b>	<b>RT5-0.3</b>	<b>RT5-0.5</b>	<b>RT5-0.9</b>	<b>RT5-1.5</b>	<b>RT5-3.0</b>	<b>RT5-5.0</b>	<b>RT5-7.0</b>	<b>RT5-9.0</b>
F	42	52	76	107	123	143	276	316
L	50	62	88	119	135	160	300	340
Kg	0.1	0.2	0.4	1.2	1.7	2.9	8.2	10
<b>7 Roll**</b>	<b>RT7-0.3</b>	<b>RT7-0.5</b>	<b>RT7-0.9</b>	<b>RT7-1.5</b>	<b>RT7-3.0</b>	<b>RT7-5.0</b>	<b>RT7-7.0</b>	<b>RT7-9.0</b>
F	54	68	100	143	167	193	376	436
L	62	78	112	155	179	210	400	460
Kg	0.1	0.2	0.5	1.6	2.3	3.8	11.2	13.7

\* Specify 2/3 (2 rolls on operating side) or 3/2 (3 rolls on operating side) version after main part number.

\*\* Specify 3/4 (3 rolls on operating side) or 4/3 (4 rolls on operating side) version after main part number.